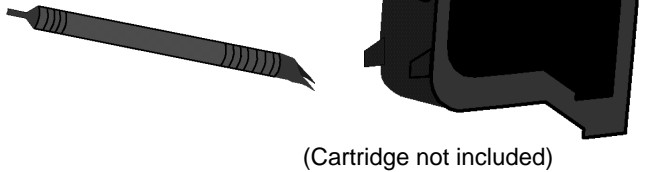


KO•REC•TYPE® Ink Jet Refill Kits: H45-O

Instructions for Refilling
Hewlett Packard HP51640A
and HP 51645A Cartridges



Introduction

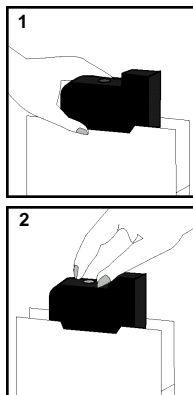
This kit provides two refills for the HP51640A and HP51645A Cartridges. When completely full, each cartridge will hold 40 ml of ink.

Kit Contents

- One 80 ml bottle of black ink
 - Resealing plugs
 - Prybar tool
 - Refilling station
-
- READ ALL INSTRUCTIONS CAREFULLY BEFORE REFILLING.
 - Follow instructions in your printer manual for removal and installation of the ink jet cartridge.
 - This Ko•Rec•Type® kit is compatible with the original equipment manufacturer's ink but is not guaranteed with other refiller's ink.
 - Avoid touching or handling the ink nozzles or contact plate on the cartridge.
 - Never allow the ink cartridge to dry out completely.

Simple Steps to Follow

- 1** Remove the cartridge from the printer and insert it inverted into the refilling station with the printhead facing up.
- 2** Peel off the circular black seal to reveal a metal plug, or punch through the label to push the ink refill ball (seal) into the cartridge using the pointed end of the supplied prybar tool.



- 3** Use the pointed end (punch end) of the supplied prybar tool and moderate pressure to push the metal ball plug into the ink chamber. (This will not interfere in its performance in any way.) This creates the ink fill hole.

If this is not your first refilling of the cartridge, pry the plug loose with the prybar end of the tool. Hold a finger over the plug as you lift out. Save the plug for resealing the cartridge. Proceed to Step 4.

- 4** Remove the cap from the ink bottle dispensing tip and insert the tip of the bottle all the way into the ink fill hole. Squeeze the bottle gently but firmly, aiming the tip to the side of the cartridge to minimize air pockets.

A completely empty cartridge takes approximately 40 ml of ink (about half of the bottle). If the cartridge is not completely empty it will take less ink to refill.

- 5** When ink bubbles over the ink fill hole, back the tip out about 1/8" and gently tap the side of the cartridge to see if any air bubbles appear on the surface. Repeat the tapping and inking process until no more air bubbles form at the top. It is important to fill the cartridge completely so there is no air left inside the cartridge.

- 6** Gently squeeze the sides of the cartridge to remove any air pockets. At the same time, reseal the ink hole securely with the supplied plug. Use punch end of the tool or your thumb to lock it down.

- 7** Wipe off excess ink from the cartridge including copper strip with a cotton swab or paper towel. Clean any ink on hands and surfaces immediately with paper towels, soap and water.

- 8** Remove cartridge from the refilling station. Do not touch copper strip with your fingers. Press paper towels against printhead. An ink spot should appear on the paper towel. If not, wet the towel with warm water and press against the printhead until ink begins to flow.

- 9** Do not place a leaking or dripping cartridge back in the printer. If the cartridge is leaking, allow it to sit on paper towel or other protected surface. Let the cartridge sit for 15 minutes and check for leaking. Repeat this step as necessary. The cartridge should correct itself within 30 minutes.

- 10** Replace cartridge into the printer and run the self test or printhead clean program. If the printing is too light, repeat step 8 above.

